

map & match's back to business: news and new features of the platform

Coffee with the experts - September 26, 2025



Summary

1. Greetings & Icebreaker
2. Certifications & Co-optation
3. Platform & AI
4. New Partners Space
5. The Next Coffees
6. Business Webinar
7. HR Tech Awards 2025
8. Major Event 2026
9. Partners Catalog
10. Back to business at a glance
11. Conclusion



Hello

Greetings & Icebreaker

Welcome to the map & match's
back to business webinar

A chance to discover what's new, exchange ideas,
and prepare together for a great 2025-2026.

Survey

In a word,
how would you describe
your return to work?



Certifications & Co-optation



Level 1

Learn how to use the map & match approach and its platform to analyze, debrief, and boost individual and collective performance thanks to the Energy Skills™

€1,200-1,500

Level 2

Deepen your analysis of map & match profiles, explore talent combinations and leadership styles (including the cognitive approach) in order to refine your interpretations and enrich your programs and services.

€490

15% of the price offered to the person who recommends!

Survey

Are you interested in Level 2 training?

Would you be more interested in Level 2 for individual coaching or group coaching?

Would you be willing to recommend our certifications to a colleague?



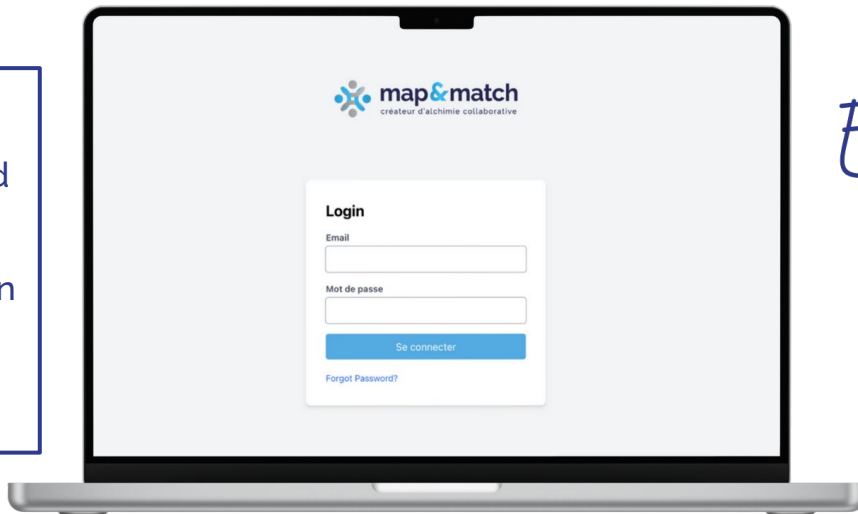


Platform & AI

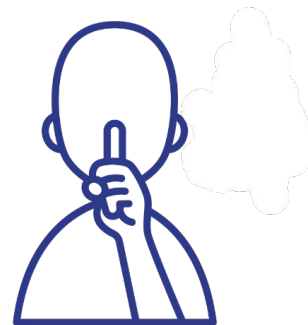
Zoom survey

What use of AI do you find most valuable?

Would you be interested in being a beta tester?

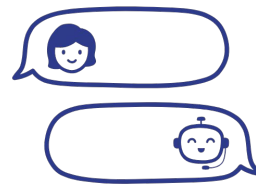
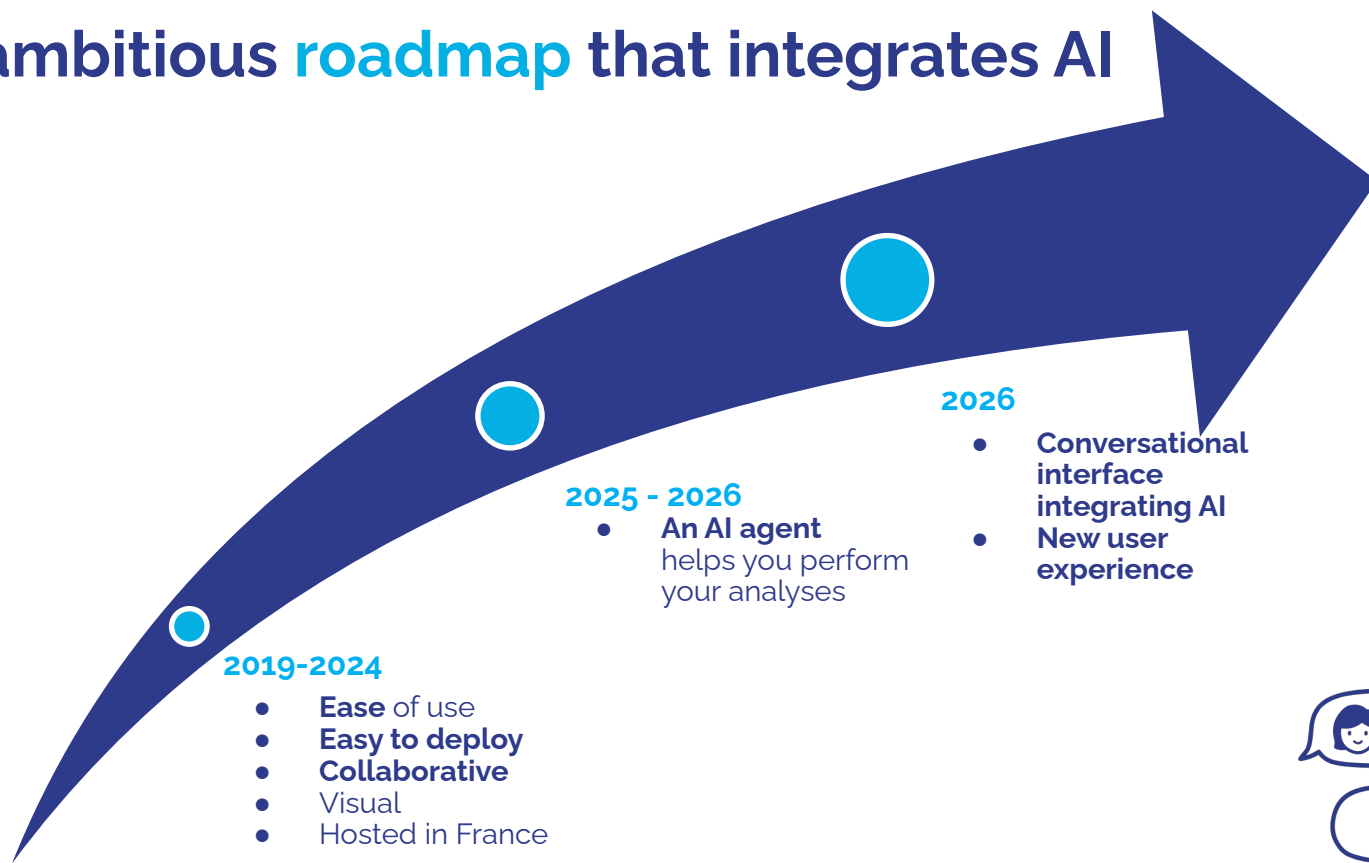


Exclusive info



Multilingual AI is coming to the platform to **enrich your analyses** and **save time**.

An ambitious roadmap that integrates AI





New Partners Space



MENU

Home

▼ Theoretical knowledge

📄 Certification docs & videos

💡 The map & match Bible

👥 Examples of debriefings/analysis

▶ Clients

⚡ Platform


🔍 Our map & match events

👤+ Our offers and services

🗣️ Press & media

📞 Contact


- Personal login
- Access to the resource library




map & match


ACTIVATE THE ENERGY SKILLS™

REVEAL, UNDERSTAND AND SUPPORT HUMAN CAPITAL
AT ALL LEVELS OF THE COMPANY
INDIVIDUAL, TEAM (INCLUDING CODIR), PROJECT, ORGANIZATION



map & match
www.mapandmatch.com





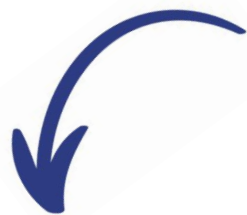
Welcome to the map & match partners space

Survey



Are there any map & match resources you find missing?

Would you like to participate in the beta test of the partners space?



Upcoming Coffees



What's planned in French

- Handling Customer Objections
- Supporting an Executive Committee
- Analyzing Leadership Talents
- Managing map & match Irritants
- Round table discussion among peers

Zoom survey

Which topics interest you most?

Which time slot works best for you?

Which day works best for you?

How often?



2 options:

- Automatic subtitling
- Dedicated coffees in English

Business Webinar



Upcoming dates

- Tuesday, September 30 : live captioning
- then once per quarter

A great opportunity to discuss your **business challenges** and share **business development practices**.

Survey



Are you interested
in this type of webinar?

map & match at the HR Tech Awards



The concept?

- A 15-minute pitch in front of an HR jury
- Broadcast to 100,000 professionals via myRHline
- A LinkedIn vote to support the most innovative solutions
- A Grand Prize awarded in December 2025!

Zoom survey

Would you like to be notified
of the voting date on
LinkedIn?



4 key criteria:

- innovation
- tangible impact
- user experience
- quality of the pitch





Major event in 2026

We are considering organizing a major event in 2026 to bring together the map & match community, celebrate our successes and open up new perspectives.

Before deciding on the format, we would like to hear your opinion.

Zoom survey

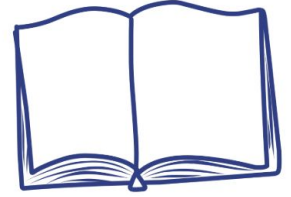
Would you be willing to participate in an event in French?

What format would you prefer for this major event?



Our partners catalog

Let's take stock together!



We are updating our partners catalog: your activities, your use of map & match, and your challenges. This will allow us to better promote your expertise and support you more effectively.

Zoom survey

Since your certification, how many coaching sessions have you conducted with map & match?

What types of coaching do you conduct most often?

What are the biggest obstacles in your deployments?

Are you certified in another approach or tool?



Is there anything new or successful that you would like to share with the community?

The new season **at a glance**

What's **changing**

- New AI-integrated Platform
- New Website
- New Partners Space
- **Update of the Training Course and Resources in English**
- Community Event



What **remains** the same

- Two levels of Certification
- Co-optation
- Coffee with the Experts
- Business Webinars
- **Support Package (1 to 3 hours)**
- **Our enthusiasm, energy, and desire to help you deploy map & match**

Thank you!

